



Northfields

JEDDO ROAD
W12

£625,000 O.I.E.O

Shepherds Bush

JEDDO ROAD, W12

£625,000 Offers In Excess Of

Stylish and contemporary, this ground floor Edwardian maisonette showcases two double bedrooms, a modern bathroom suite, an open plan reception/ kitchen with double doors leading out to the private garden and a long lease.

Conveniently located for the wonderful array of independent shops, restaurants and cafes on Askew Road whilst benefitting from the variety of transport links including Stamford Brook (District line), Turnham Green (District & Piccadilly) and Acton Central Overground line.

- Ground floor Edwardian maisonette
- Two double bedrooms
- Open plan kitchen/ diner
- Contemporary bathroom
- 42ft Private garden
- Long lease
- Period features

At a glance



Two Bedrooms



One Bathroom



Stamford Brook st



Askew Village

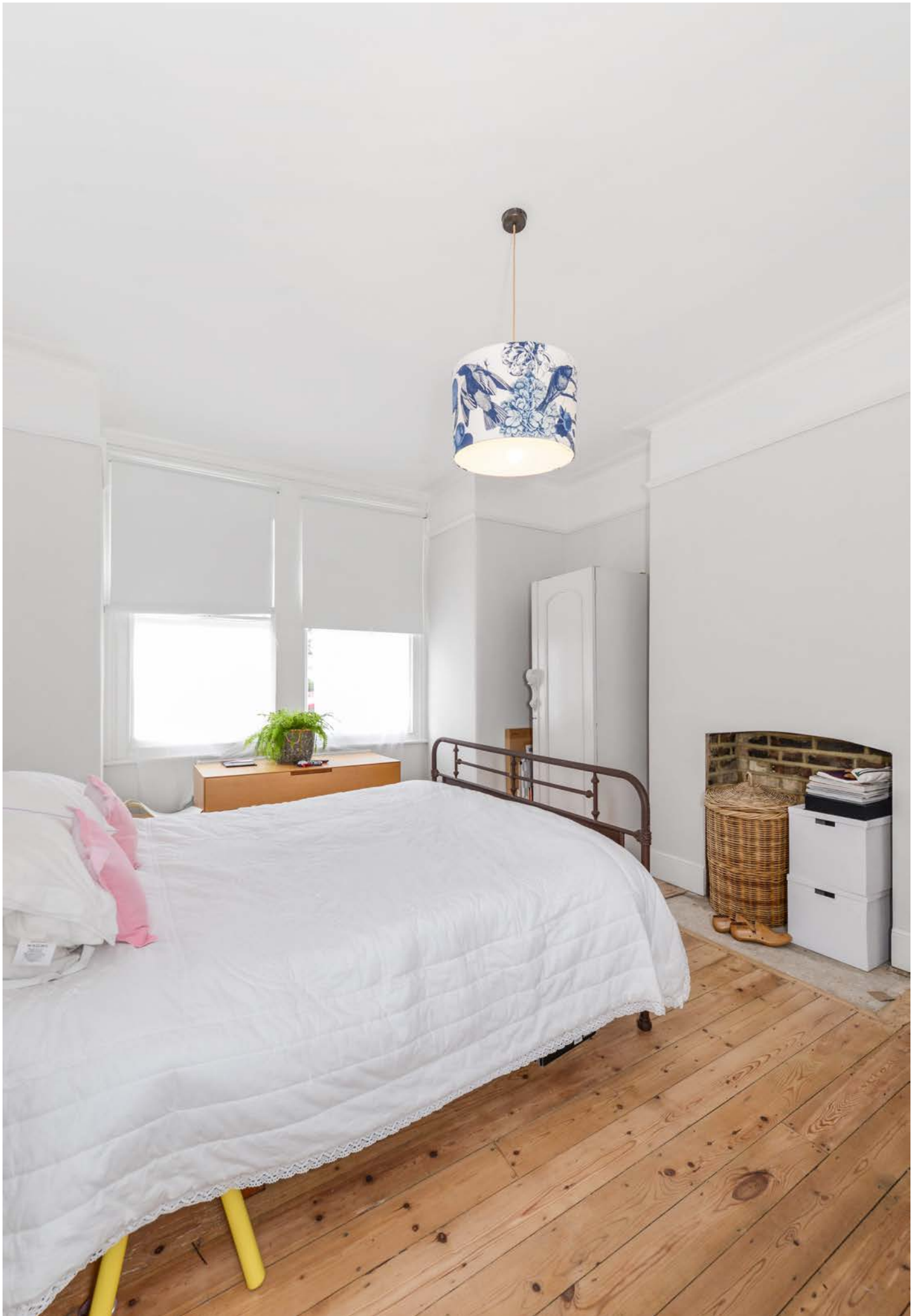


Wendell Primary School



Wendell Park



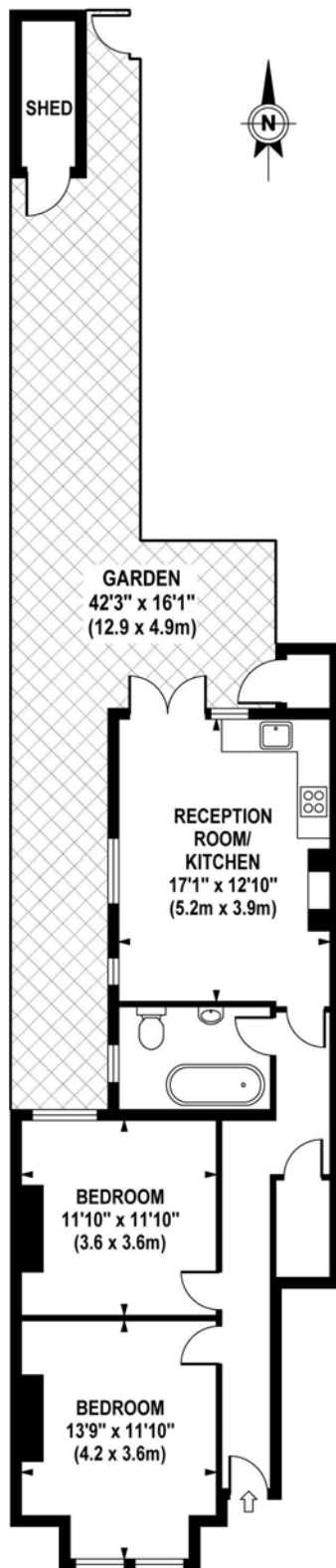




APPROXIMATE GROSS INTERNAL AREA

720 sq ft / 66.9 sq m

JEDDO ROAD
Approximate Gross Internal Area 720 sq ft / 66.9 sq m



**GROUND FLOOR
GROSS INTERNAL
FLOOR AREA 720 SQ FT**

Although every attempt has been made to ensure accuracy, all measurements are approximate.
The floor plan's for illustrative purposes only and not to scale. Measured in accordance to RICS standards.
DE-PHOTOGRAPHY.NET

LOCATION

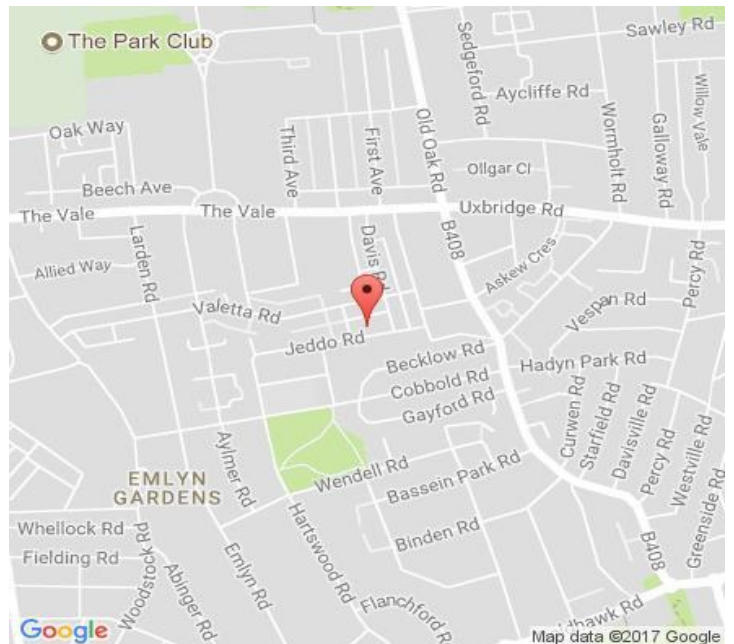
Home to the Shepherd's Bush Empire, The Bush Theatre and the BBC, Shepherd's Bush is a vibrant cultural centre with a huge range of places to eat, drink and shop. Shepherd's Bush Green, Brook Green, Wendell Park and Ravenscourt Park all offer green spaces to relax while Westfield Shopping Centre is a prime destination for shopping. Schools popular with local families include Wendell Park and Greenside Primary Schools.

GENERAL

POSTCODE: W12
LOCAL AUTHORITY: Ealing
COUNCIL TAX BAND: D
LEASE LENGTH:



PROPERTY LOCATION



Your local independent
award winning estate agents



Tell us what you'd like to do with
your property in 2017 and we'll tailor
a plan for you to make it happen.

Shepherds Bush

127 Askew Road,
Shepherds Bush W12 9AU
Lettings: 020 8740 8833
E: enquiries@northfields.co.uk

020 8740 8833

www.northfields.co.uk

CONTACT

Us today

TO FIND OUT

MORE