



Northfields

NORMANDY PLACE
W12

£450,000

Shepherd's Bush



NORMANDY PLACE, W12

£450,000



Reception Room



Kitchen



One Bedroom



Bathroom



Allocated

A fabulous one bedroom modern flat provides a great space with a good sized balcony and lift access. The property consists of a lovely spacious reception room with more than enough space for dining. A large double bedroom with kitchen with fully integrated appliances. The bathroom is tiled and includes a shower over the bath.

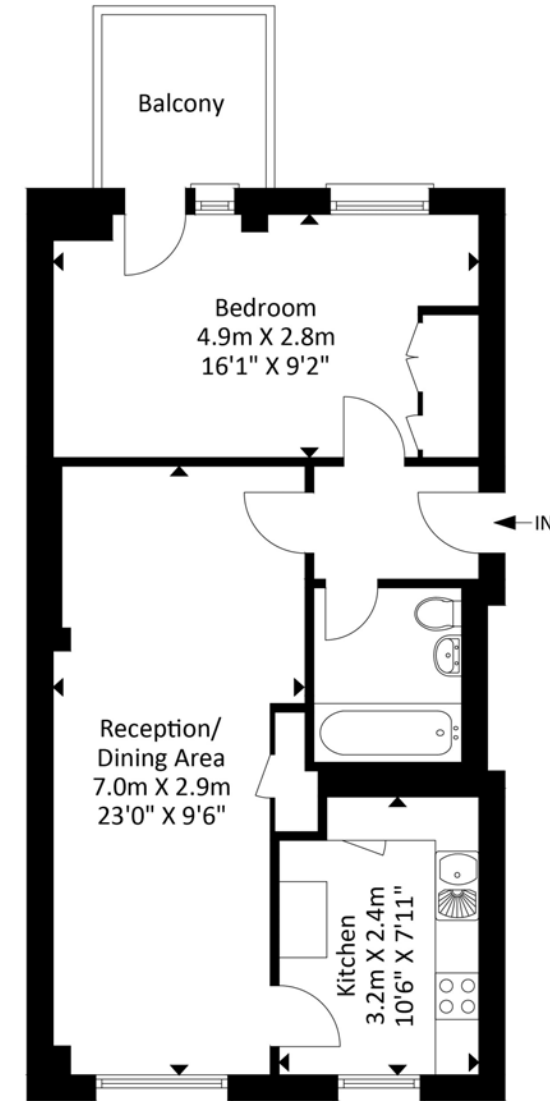
The property is located within easy reach of the vast selection of amenities in Shepherds Bush including the fashionable shops, bars, Cafe's and restaurants at the Westfield Shopping Centre.

EPC RATING: TBC

LOCAL AUTHORITY: Hammersmith and Fulham

COUNCIL TAX BAND: C

Normandy Place



Third Floor
Approximate Floor Area
514.51 sq ft
(47.80 sq m)



Approximate Gross Internal Area = 47.80 sq m / 514.51 sq ft
Illustration for identification purposes only, measurements are approximate, not to scale.

Your local independent award winning estate agents



Shepherds Bush

127 Askew Road,
Shepherds Bush W12 9AU
Sales: 020 8740 8833
E: sbsales@northfields.co.uk

020 8740 8833

www.northfields.co.uk

CONTACT

Us today

TO FIND OUT

MORE