



VALETTA ROAD  
W3

£550,000

Acton



# VALETTA ROAD, W3

£550,000



Reception Room



Kitchen



Two Bedrooms



Bathroom



No Parking

A two bedroom upper ground floor maisonette on the popular Valetta Road. This property benefits from its own private entrance, a bright and spacious living room, a great sized kitchen and a family bathroom.

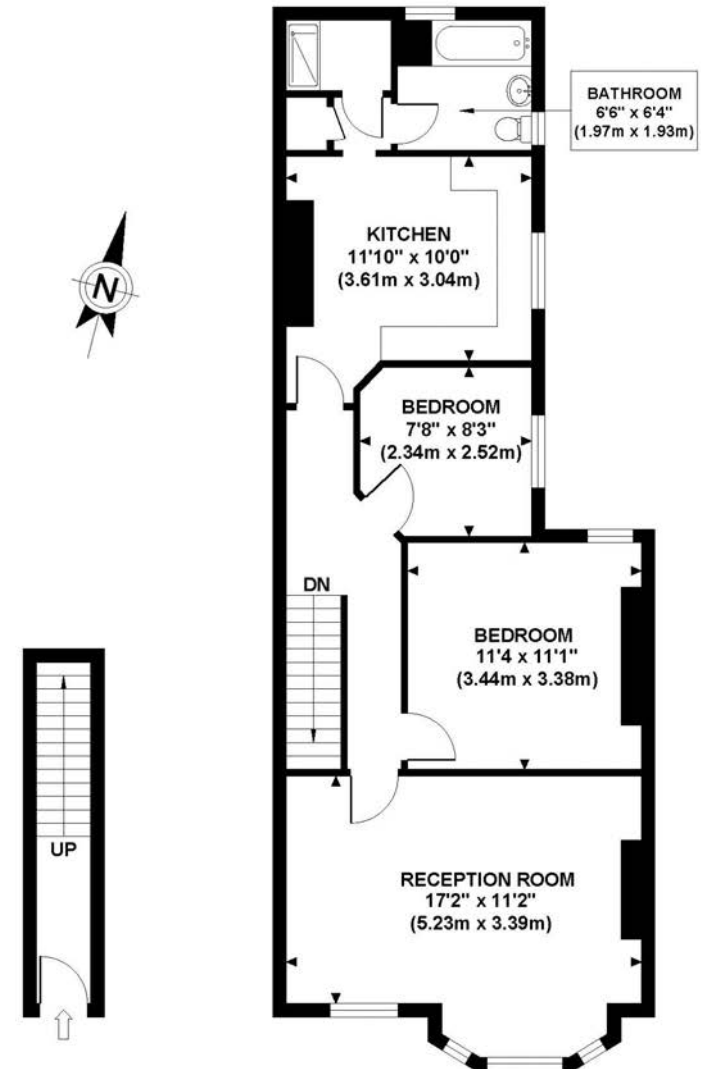
A further benefit is planning permission to extend in the loft to create a further two bedrooms.

Located moments from the independent shops & cafes on Askew Road and providing easy access to Chiswick High Road and Shepherds Bush, the property further benefits from excellent commuter credentials with Stamford Brook, Turnham Green and Acton Central stations all nearby.

EPC RATING: D  
LOCAL AUTHORITY: Ealing  
COUNCIL TAX BAND: D

## VALETTA ROAD

Approximate Gross Internal Area 752 sq ft / 69.90 sq m



**GROUND FLOOR**  
GROSS INTERNAL  
FLOOR AREA 44 SQ FT

**FIRST FLOOR**  
GROSS INTERNAL  
FLOOR AREA 708 SQ FT

Although every attempt has been made to ensure accuracy, all measurements are approximate. The floor plan's for illustrative purposes only and not to scale. Measured in accordance to RICS standards.

# Your local independent award winning estate agents



## Shepherds Bush

127 Askew Road,  
Shepherds Bush W12 9AU  
Sales: 020 8740 8833  
E: [sbsales@northfields.co.uk](mailto:sbsales@northfields.co.uk)

020 8740 8833

[www.northfields.co.uk](http://www.northfields.co.uk)

CONTACT

*Us today*

TO FIND OUT

MORE